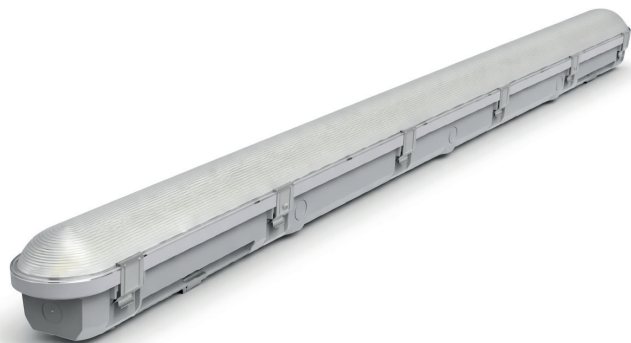


STANLEY

LED TRI-PROOF LIGHT

SXIMTRI02-PS-CCT

High-performance industrial LED luminaire with multi-wattage and 3CCT selectable technology. Designed for commercial and industrial applications requiring flexibility and efficiency.



FEATURES

- 4-Level Power Selectable: 35W / 42W / 50W / 60W
- 3CCT Selectable: 3000K / 4000K / 6500K
- Wide Voltage Range: AC100-277V
- High efficiency LED system
- Durable industrial construction
- Surface mounting installation

APPLICATION

- Industrial Areas
- Sidewalks
- Parks
- Schools
- And Others



LED



Multi Wattage Switchable



Eco Friendly

UV Protection



Easy Installation

OPTICAL DATA

Color Temperature (CCT)	3000K, 4000K, 6500K
Luminous Flux	6870 Lm, 6000Lm
	5109 Lm, 4092Lm
Beam Angle	120°
Type of Distribution	Direct Symmetrical
Opening Angle	80

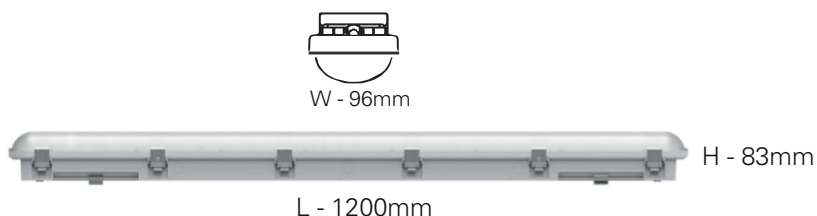
PHYSICAL DATA

Finish	Gray & White
Protection Level - IP	IP65
Dimensions (LxWxH)	1200x96x83mm
Type of Installation	Surface Mounted
Body Frame	PC
Optical Material	Diffuser PC
Operation Temperature	-20°C to +40°C

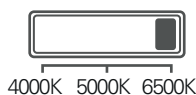
ELECTRICAL DATA

Input Power	35W, 42W, 50W, 60W
Power Switchable	YES
Operating Voltage	100-277 V
Frequency	50-60 Hz
Power Factor	>0.9
CRI	80
Dimmable	NO

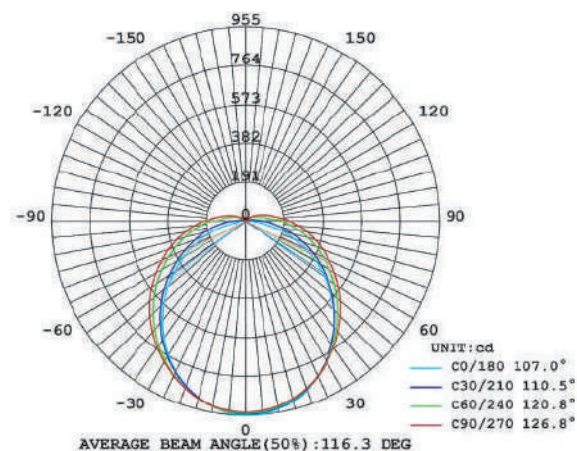
DIMENSIONS



(CCT) Color Temperature Switch



LUMINOUS INTENSITY DISTRIBUTION



THE MEASURE OF A PRO™