

STANLEY

LED STREET LIGHT CCT

SXIMST01-100WCT



High-performance LED street light with integrated photocell sensor and 3CCT selectable technology. Designed for roadway, parking lot, and outdoor area illumination.

FEATURES:

- Integrated Photocell Sensor (Auto ON/OFF)
- 3CCT Selectable: 4000K / 5000K / 6000K
- Type III Light Distribution
- High Efficiency: 140-150 lm/W
- Wide Voltage Range: 120-277 VAC
- Slipfitter Arm A-C Included
- Suitable for Wall Mount & Pole Mount
- Durable Dark Bronze Finish

APPLICATION

- Roadways
- Industrial Facilities
- Parking Lots
- Commercial Outdoor Areas
- Perimeter Lighting



IP65



Multi Color Temperature (CCT)

PHOTOCELL SENSOR



OPTICAL DATA

Color Temperature (CCT)	4000K, 5000K, 6000K
Lumens	140-150 Lm/W
Beam Angle	80x150°
Type of Distribution	Direct Symmetrical
Life Span	50 000 Hrs
Optical Material	Diffuser PC

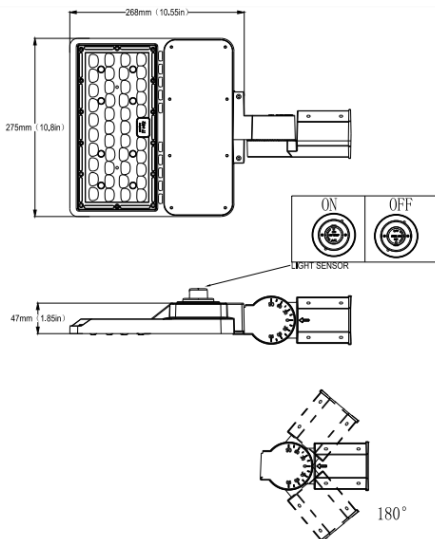
PHYSICAL DATA

Finish	Dark Bronze
Protection Level - IP	IP65
Dimensions (LxVxH)	275x268x47 mm
Body Frame	Die -Cast Aluminium
Operation Temperature	-40°C to +50°C
Mounting Options	Slipfitter Arm A-C (Wall Mount & Pole Mount Compatible)

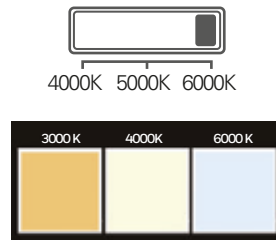
ELECTRICAL DATA

Input Power	100W
Power Switchable	YES
Operating Voltage	120-277 V
Frequency	50-60 Hz
Power Factor	>0.95
CRI	70

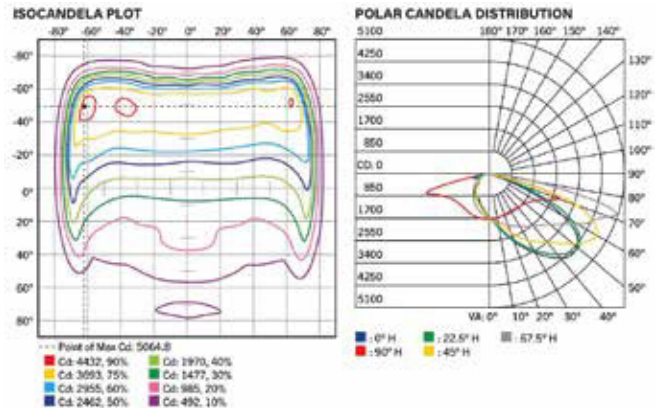
DIMENSIONS



(CCT) Color Temperature Switch



ADDITIONAL INFORMATION



THE MEASURE OF A PRO™