

# STANLEY

## LED STREET LIGHT CCT

### SXIMST01-200WCT



High-performance 200W LED street light with integrated photocell sensor and 3CCT selectable technology. Designed for roadways, highways, parking lots, and large outdoor areas requiring high lumen output.

#### FEATURES:

- Integrated Photocell Sensor (Auto ON/OFF)
- 3CCT Selectable: 4000K / 5000K / 6000K
- Type III Light Distribution
- High Efficiency: 140-150 lm/W
- Wide Voltage Range: 120-277 VAC
- Slipfitter Arm A-C Included
- Compatible with Wall Mount & Pole Mount
- Durable Dark Bronze Finish

#### APPLICATION

- Highways
- Main Roads
- Large Parking Areas
- Industrial Complexes
- Commercial Outdoor Areas



# IP65



Multi Color Temperature (CCT)

PHOTOCELL SENSOR



#### OPTICAL DATA

Color Temperature (CCT)	4000K, 5000K, 6000K
Lumens	140-150 Lm/W
Beam Angle	80x150°
Type of Distribution	Direct Symmetrical
Life Span	50 000 Hrs
Optical Material	Diffuser PC

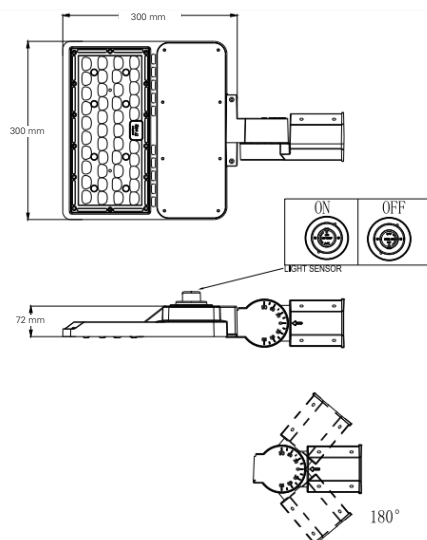
#### PHYSICAL DATA

Finish	Dark Bronze
Protection Level - IP	IP65
Dimensions (LxVxH)	300x300x72 mm
Body Frame	Die -Cast Aluminium
Operation Temperature	-40°C to +50°C
Mounting Options	Slipfitter Arm A-C
(Wall Mount & Pole Mount Compatible)	

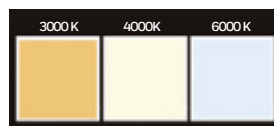
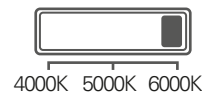
#### ELECTRICAL DATA

Input Power	200W
Power Switchable	YES
Operating Voltage	120-277 V
Frequency	50-60 Hz
Power Factor	>0.95
CRI	70

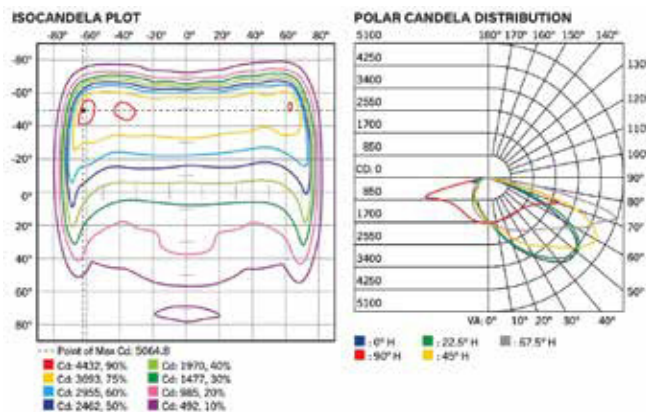
#### DIMENSIONS



(CCT) Color Temperature Switch



#### ADDITIONAL INFORMATION



**THE MEASURE OF A PRO™**